

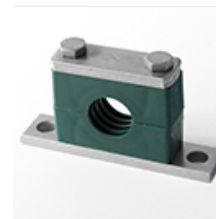
Complete Clamp Heavy Series Size 3S 16 mm Polypropylene W12 Weld Plate - Stauff 1110008303

Item no. STF-1110008303**Manufacturer** Stauff**Manufacturer no.** SPAL-DUEB-3016-PP-DPAL-AS-M-W12

Complete Clamp Heavy Series Size 3S 16 mm Polypropylene W12 Weld Plate. The STAUFF pipe clamp fixes pipes, hoses and cables securely and with vibration damping.

TECHNICAL DATA

Artikel-Authentizität	Originalprodukt
Artikelzustand	Neu
Country of Manufacture	Germany
Werkstoff	Polypropylen (PP)
Zolltarifnummer	39269097



DESCRIPTION

The STAUFF pipe clamp fixes pipes, hoses and cables securely and with vibration damping. The two-part clamp halves enclose the line over its full circumference and hold it without play to DIN 3015.

Benefits

- Full-circumference, vibration-damping support of the line
- Dimensioned to DIN 3015, combinable within the STAUFF modular system
- Clamp halves in polypropylene, polyamide, aluminium or steel to suit the application

Version

Complete Clamp Heavy Series Size 3S 16 mm Polypropylene W12 Weld Plate.

Applications

Routing and fixing of hydraulic, pneumatic and pipework lines in machinery, plant and vehicle construction.