

ROTEX 24 Hub aluminium, bore 17 - KTR 020246001700

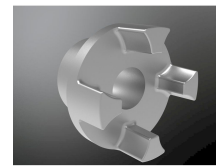
Item no. KTR-020246001700 **Manufacturer** KTR

Manufacturer no. 020246001700

Coupling hub for the ROTEX 24 jaw coupling in aluminium, finish-bored to 17 mm. Mounts on the shaft and transmits torque through the spider.

TECHNICAL DATA

Artikel-Authentizität	Originalprodukt
Artikelzustand	Neu
Baureihe	ROTEX
Bohrung (mm)	17.000000
Country of Manufacture	Germany
Weight	0.11 kg
Werkstoff	Aluminium
Zolltarifnummer	84839089



DESCRIPTION

ROTEX is a torsionally flexible jaw coupling from KTR. It transmits torque positively through an elastomer spider between two jaw hubs and compensates angular, radial and axial shaft misalignment. If the spider wears, the jaws engage with each other so the coupling stays fail-safe.

Benefits

- Sturdy hub for durable torque transmission
- Prepared ready to fit
- Combines with any ROTEX 24 spider

Technical data

- Size: ROTEX 24
- Material: aluminium
- Bore: 17 mm

- Keyway: DIN 6885/1

Applications

A complete coupling needs two hubs and one spider of size 24.