

Standard Type, 100/200W - LEJS - SMC LEJS63S7A-1500-RAC2H

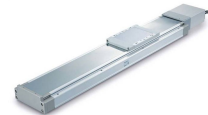
Item no. SMC-LEJS63S7A-1500-RAC2H **Manufacturer** SMC

Manufacturer no. LEJS63S7A-1500-RAC2H

Accuracy: Basic Type Size: 63 Motor Type: S7 (200W Output, Absolute Encoder, LECSB/C/S) Lead Screw: A (Size 40 Stroke: 1500 mm Motor Option: w/o Lock Actuator Cable type: R (Robotic Flexible Cable) Actuator Cable Length: A (10m) Driver Type: C2 (LECSC2 200 V to 230 V) I/O Cable Length: H (Without Cable, Connector only)

TECHNICAL DATA

Artikel-Authentizität	Originalprodukt
Artikelzustand	Neu
Weight	0.1 kg
Zolltarifnummer	85013100



DESCRIPTION

- Designed to accommodate larger loads
- Double axis linear guide: High rigidity and optimum precision
- Compact design
- Compatible with AC Servo motor drivers.